



GRESHAM



MONOKO

FOR CONTEMPLATION OR COLLABORATION



GRESHAM

THE BEST DESIGNS
ARE THOSE THAT
DISSOLVE INTO
BEHAVIOUR

NAOTO FUKASAWA

MONOKO

FOR CONTEMPLATION OR COLLABORATION

Designed with the needs of the modern mixed-use space in mind, our Monoko collection of single and dual chairs is stylish and comfortable in equal measure. Available as either a single, or double seater, with frame in a natural or dark wood finish, plus bespoke choice of fabrics – from on-trend seventies' inspired mustard to pared back charcoal grey – Monoko's chic, Scandinavian style offers comfort to those seeking anything from contemplative quiet to a collaborative chat, whether in a workplace, home, or hospitality environment.



THE INSPIRATION

With the boundaries between workplace, hospitality, and residential environments more blurred than ever before, each of these spaces must now serve a multitude of purposes to function well. This, paired with the limitations on human connectivity during the pandemic has placed greater emphasis on collaboration. Moreover, working from home for extended periods of time has given rise to the importance of comfort. As a result of this combination, furniture for commercial schemes must be comfortable and stylish while offering maximum flexibility.

Steven Parkinson - Monoko Lead Designer





MONOKO

SPECIFICATIONS

Designed with both form and function in mind, Monoko's considered proportions make a comfortably chic statement.



MON1S
Single Seater
Arm Chair



MON2S
Two Seater
Arm Chair







FLEXIBILITY FOR A MORE SUSTAINABLE FUTURE

Flexibility is at the heart of Monoko, not just in its versatility for end-users, but for its end-of-life management too. The solid beech frame has been simply paired with a recyclable foam base, and upholstery fabric – nothing more - so every piece can be taken apart as easily as it's been put together. The decision was made to avoid any glue or plastic when designing the range. With simplicity in mind, Monoko has the potential for refurbishment. The cushion can be removed, replaced, and re-upholstered on the existing wooden frame to give the comfort and appearance of a new piece, but without any unnecessary waste.

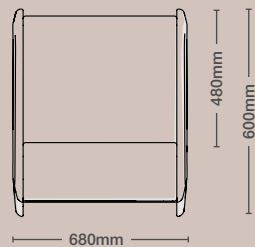
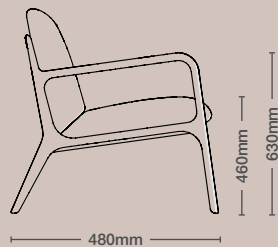
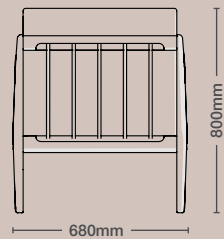
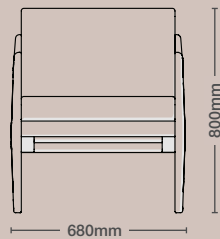


MONOKO

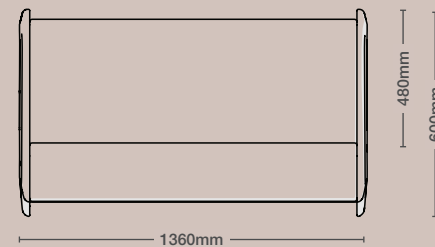
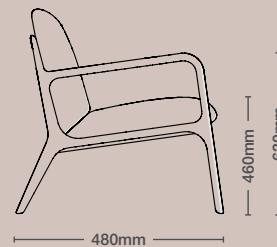
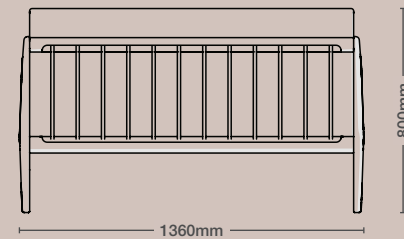
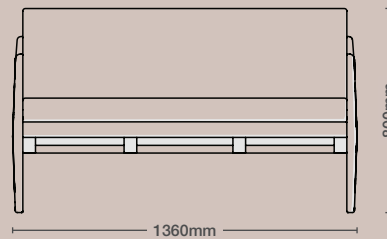
SPECIFICATIONS

Product Data Specifications for the Monoko Range including
2D and 3D Blocks are available to Download on the Gresham Website.

Single Seater Arm Chair



Two Seater Arm Chair





MONOKO

SPECIFICATIONS

Designed with both form and function in mind, Monoko's considered proportions make a comfortably chic statement.

FEATURES

Standard Features

Seat & Back: CMHR Moulded Foam
Structural Frame: Solid Beech Stained
Seat Board: Plywood

Optional Features

Two Tone Upholstery Available

FRAME OPTIONS

Solid Beech Stained Frames

Available in 2 Standard Colours



Natural
Oak



Dark
Walnut

PERFORMANCE STANDARDS

Performance Standards

Quality: BS EN ISO 9001:2015
BS Certification: 16139:2013 – L1
Environment: BS EN ISO 14001:2015

ENVIRONMENT PERFORMANCE

Material Content

Components are Constructed of the Following

Beech Frame



Ply Wood



Foam



Fixings



Fabric



Recyclability

The Monoko Range is 100% Recyclable



Please Note: Color images are for reference only.
Please verify with actual color samples.

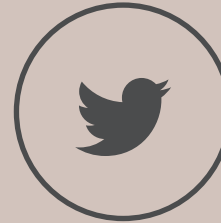


FIND US ON SOCIAL MEDIA



FACEBOOK

Gresham Office Furniture



TWITTER

@greshamltd



INSTAGRAM

GreshamOfficeFurniture



LINKEDIN

linkedin@gof.co.uk



GRESHAM



GRESHAM

Gresham Head Office

Lynstock Way,
Bolton
Lancashire
BL6 4SA
Telephone: 01204 664422

London Showroom

28 St John's Lane,
Clerkenwell,
London
EC1M 4BU
Telephone: 01204 664422

Manchester Showroom

1 Federation Street,
Manchester
Greater Manchester
M4 4BF.
Telephone: 01204 664422

WWW.GOF.CO.UK